



1401 S. Broadway Suite 103A | Joshua, TX 76058

## INSTALLATION INSTRUCTIONS

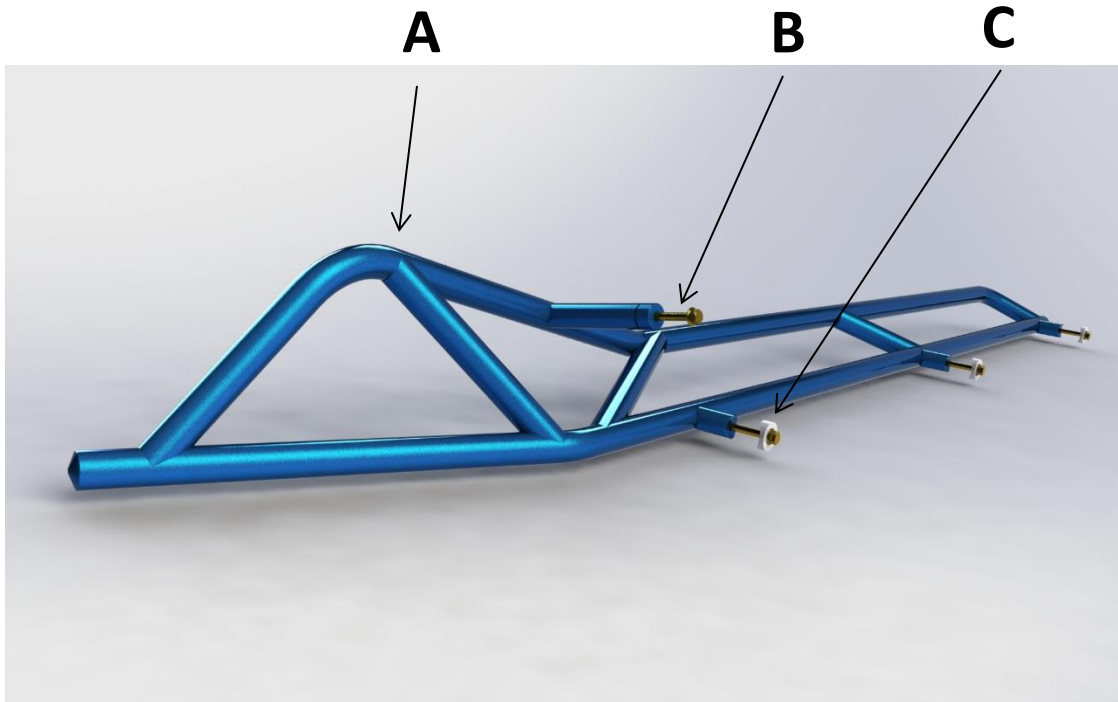
### MAVERICK R MAX SLIDERS

CMR-4101

Read Instructions entirely, and view illustrations before beginning.

ITEM	DESCRIPTION	QTY
A	DVR ROCK SLIDER	1

ITEM	HARDWARE	QTY
B	M10 80MM LONG BOLT	8
C	COPED FRAME WASHER	6



### Have questions or comments?



817-366-6110



817-366-6110



INFO@ABFFABRICATION.COM

*Thank You for Sharing*



FACEBOOK.com/ABFfabrication



### LIABILITY STATEMENT

ABF Fabrication accessories are engineered to best fit customer ATV/UTV's in stock condition. cutting, grinding, or modifying any original, or aftermarket, accessories will void any warranty offered by ABF fabrication and is not suggested. ABF Fabrication accessories could have fitment issues with other aftermarket accessories. If Customer has aftermarket accessories on vehicle, contact ABF Fabrication to ensure that all accessories will be compatible.

Customer should be aware that installing suspension accessories, wheels and tires, axles or other components may change the behavior of the vehicle and may require more frequent maintenance and part wear. Operating any off-road vehicle while, or after, consuming alcohol and/or drugs increases risk of bodily harm or death. No warranty or representation is made as to this accessories ability to protect customer from severe injury or death. ABF Fabrication urges operators and passengers to always wear a helmet and appropriate riding gear.

By purchasing and installing ABF Fabrication accessories, customer agrees that should any damages occur, ABF Fabrication will not be held responsible for repair fees, replacement parts, and shipping costs. ABF Fabrication, nor any 3rd party, will not be held responsible for any direct, indirect, incidental, special, or consequential damages that result from any accessories purchased from ABF Fabrication. The total liability of ABF Fabrication to customer for all damages, losses, and causes of action, if any, is not to exceed the total purchase price paid for the accessories that gave rise to the claim.

ABF Fabrication will warranty only accessories purchased from ABF Fabrication. Any damages or issues arising with OEM parts or other manufacturers accessories will not be covered by ABF Fabrication. ABF Fabrication accessories are not warranted if accessory was installed incorrectly, misused, or changed in any way.

## Tools Needed

1. 15mm Wrench
2. 13mm Wrench
3. 10mm, 13mm, 15mm, 18mm sockets
4. Extension
5. Ratchet / Impact

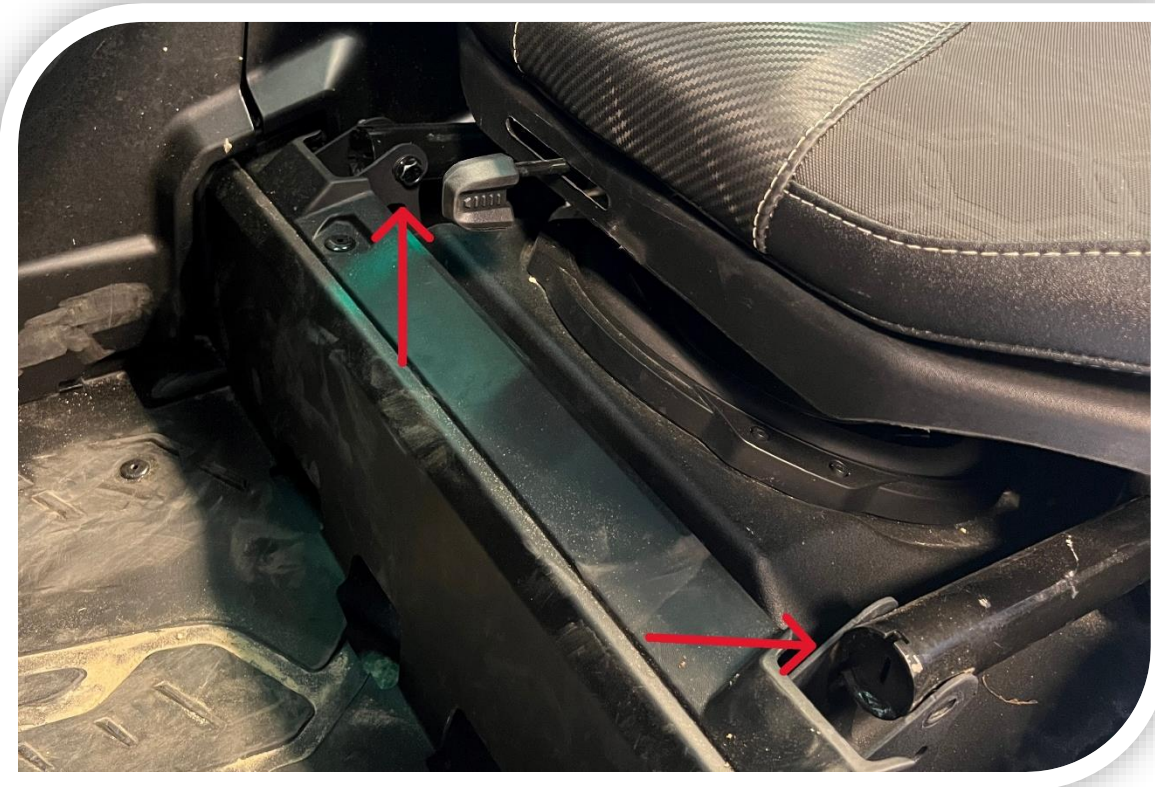
## Removal

1. Begin by removing all 4 Seats. 13mm wrench and socket on the front mounts of each seat, and 18mm socket and extension on the rear of each seat. **FIG 1, FIG 2. NOTE** (You will need to remove the harness from the lower adjusters to fully remove the seats.) The driver seat will require you to remove the 18mm nut that holds the retractors and unplug the seatbelt. **NOTE** (If you pull up the seat cushions, there are holes in the seat bottom for easy access to the 18mm seat nuts. **FIG 2.**
2. **NOTE** (SKIP if you do not have under seat sub boxes.) You will need to remove or at least loosen any under-seat sub boxes to provide you with the best access to install the sliders.

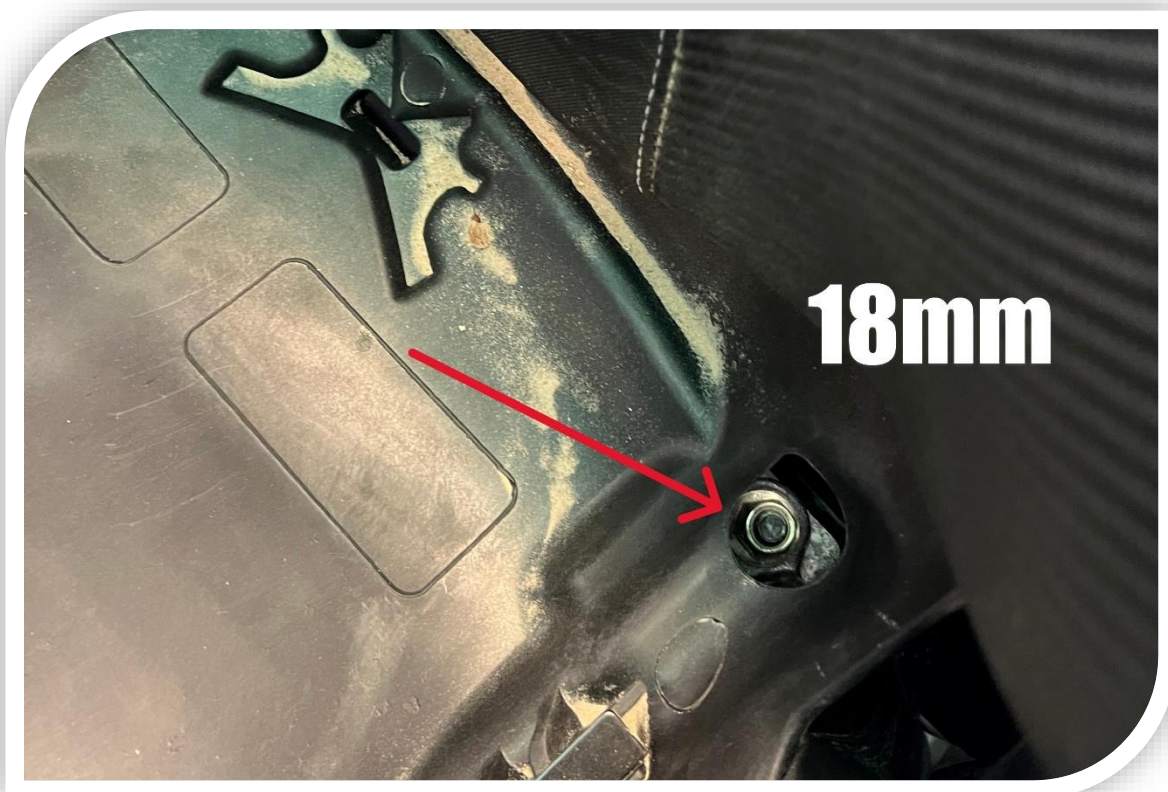
## Installation

**NOTE:** We recommend you **DO NOT TIGHTEN** all hardware until the end unless otherwise noted. Just snug the hardware so that the parts can moved/adjusted slightly.

1. Driver side- Pre-install the 10mm x 80mm bolts through the frame using the coped washers on the inside of the frame. The 2 rear locations on the main frame rail are easily accessed from inside the vehicle and receive coped washers. The front location is accessed from underneath the vehicle and receives a coped washer. The rear upper mount is accessed from behind the rear fender and DOES NOT GET A COPED WASHER. **FIG 3**
2. Align the Driver rock slider (**HIGHLY RECOMMEND 2 PEOPLE**) and start the front mounting bolt into the front mount a few threads.
3. Start the rear upper bolt into the rear upper mount. Thread in as far as you can, but do not tighten. It is very tight to get your hands in the area, and we typically use a 15mm socket and ratchet for this.
4. Start the remaining 2 bolts into the slider mounts. Middle and rear lower main frame.
5. Tighten all mounting bolts, but **make sure you start with the rear upper mount first**. All mounts work best with a 15mm socket and ratchet, but you may need to use a wrench on the front mount in some cases.
6. Repeat for Passenger side.
7. **SKIP if you do not have under seat sub boxes**. Re-install your under-seat sub boxes if you have them.
8. Re-install your seats, re-attach the driver retractors and seatbelt plug, and replace the harnesses through the adjusters.

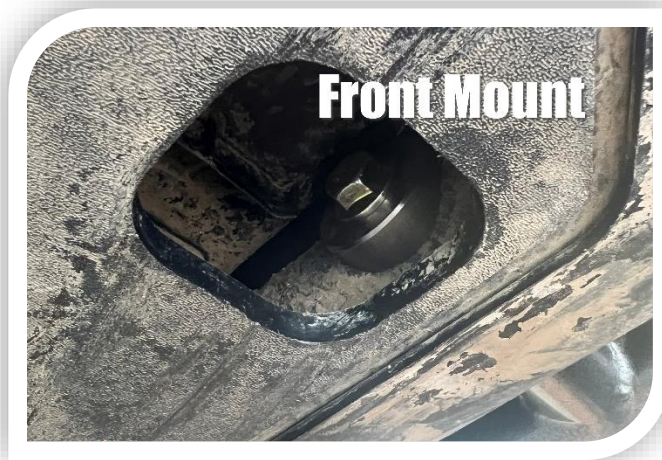
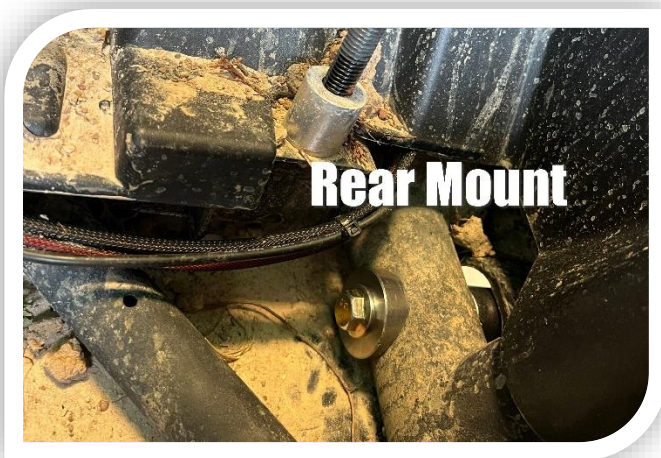


**FIG 1**



**FIG 2**





**FIG 3**

